

# Location Map

City Front Villa



## City Front VILLAS

Ajmer Road, Jaipur

Luxury villas framed by nature, crafted by Vatika.



### Connected to what matters most

Amenities		Education	
Vatika Central Park	1 min	Manipal University	7 min
Pink Pearl Water Resort	8 min	Arya Medical College	5 min
Hospital		Dharav High School	6 min
Jaipur Vatika Hospital	1 min	JK Lakshmipal University	7 min
Geetanjali Hospital	15 min	Jayshree Periwal International School	10 min
Connectivity		Neerja Modi School	13 min
Jaipur Ajmer Expressway	2 min	Retail	
Ring Road	6 min	D Mart	6 min
Narayan Vihar New Bus Stand	10 min	Decathlon	6 min
Railway Station	20 min	Commercial Workspace	
200 Ft Bypass	15 min	Mahindra SEZ	7 min
Jaipur International Airport	25 min		



City Front VILLAS

Ajmer Road, Jaipur

Vatika Infotech City, Near GVK Toll Plaza, Jaipur-Ajmer Expressway, Thikariya, Jaipur 302026



96600 86696



vatikacollections.com

CIN: U74899HR1998PLC054821

This document is designed by Vatika Architect Team for internal circulation only and not for solicitation of any sale of Property.

Disclaimers: All information, images, visuals, drawings, plans or sketches shown herein are only an architect's impression and are not to scale. Nothing contained herein intends to constitute a legal offer and does not form part of any legally binding agreement and/or commitment of any nature with its Recipients/Viewer. Recipients/Viewers are advised to exercise their discretion in relying on the information shown/ provided herein and are requested to verify all the details, including area, amenities, services and other relevant terms independently. The present document is only a representation to be circulated internally.

Exclusive Villas at Vatika Infotech City, Jaipur.





**City Front**  
VILLAS  
Ajmer Road, Jaipur

Discover a lifestyle of elegance and comfort at Vatika City Front Villas, a premium gated community nestled within the expansive 507-acre Vatika Infotech City, Jaipur.



Spread across a landscape that includes a 23-acre Central Park and 42 lush green parks, the township is a vibrant, self-contained world where every detail has been designed for balance, beauty, and belonging.

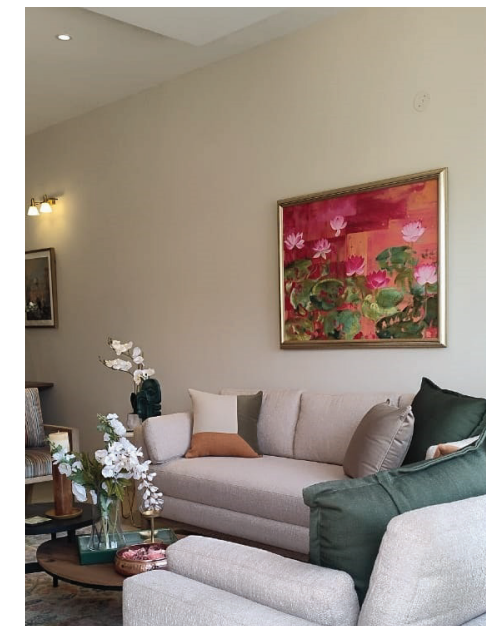
Strategically located on the Jaipur–Ajmer Expressway, with direct access via a 120 ft wide road, City Front Villas offer the perfect blend of luxury, location, and lifestyle ideal for modern families seeking space, serenity, and sophistication.



Image for reference only

## Highlights that define a refined lifestyle

-  Luxury duplex villas on plot area of 135.12 sq yd with super area of 1,838 sq ft
-  Part of the 507-acre Vatika Infotech City Township
-  Gated community with 24x7 security
-  Just 500 m from Ajmer Road
-  Prime location — adjoining commercial space, marketplace, and the main Vatika Infotech City entry
-  Spacious 3BHK villas with pooja room/store
-  Landscaped greens and wide internal roads
-  Villa entry from a 12m-wide road
-  Dedicated front lawn for each villa
-  All bedrooms with separate dress area and toilet
-  Glass railing in front balconies





# Every comfort, thoughtfully designed



At City Front Villas, every feature is designed not just for convenience, but to create a community that values peace, privacy, and togetherness, as well



Operational clubhouse/community area in close proximity



Environmentally friendly plumbing and sustainable infrastructure



Water conservation through recycled water systems



Children's park with play equipment nearby

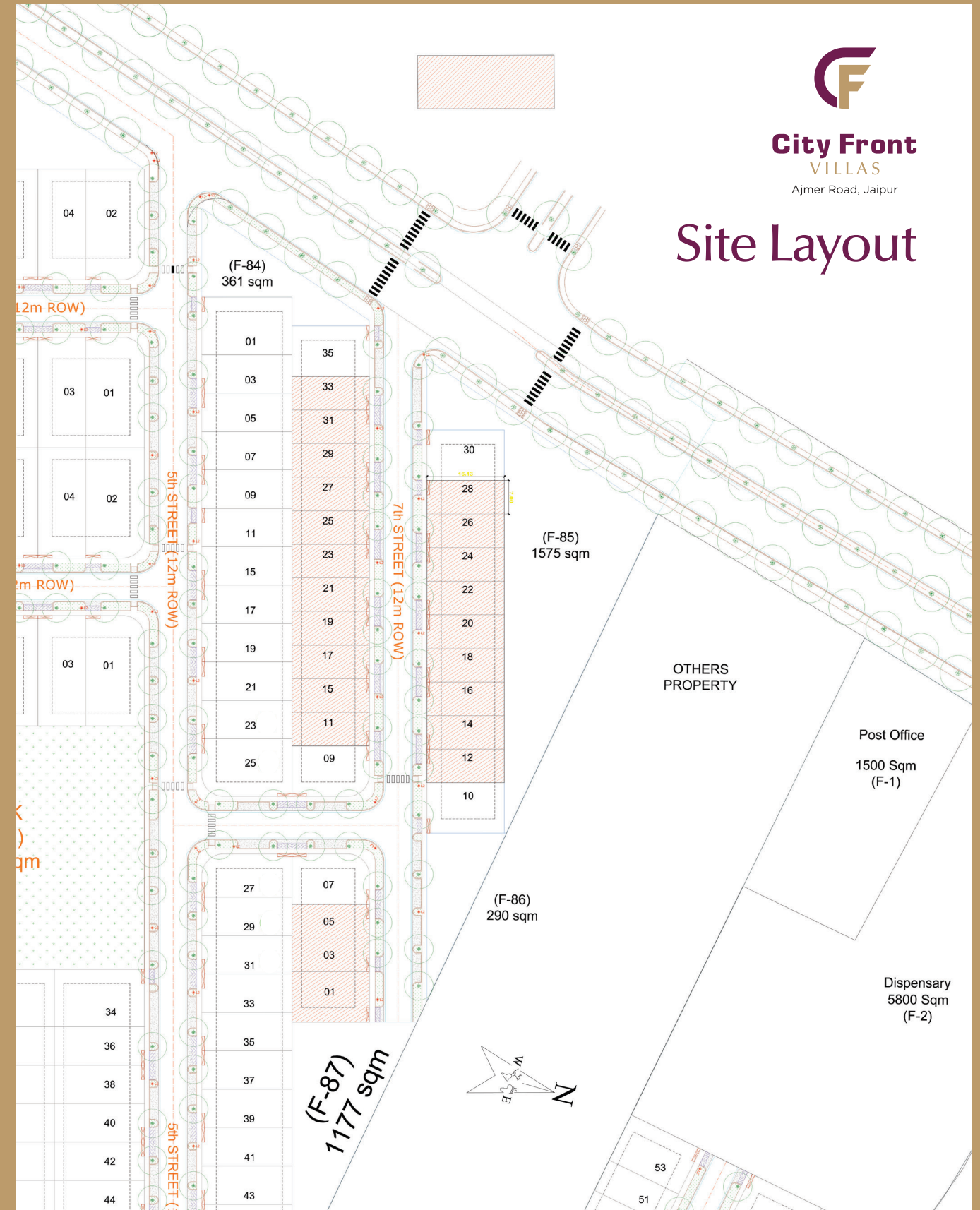


CCTV surveillance ensuring round-the-clock safety

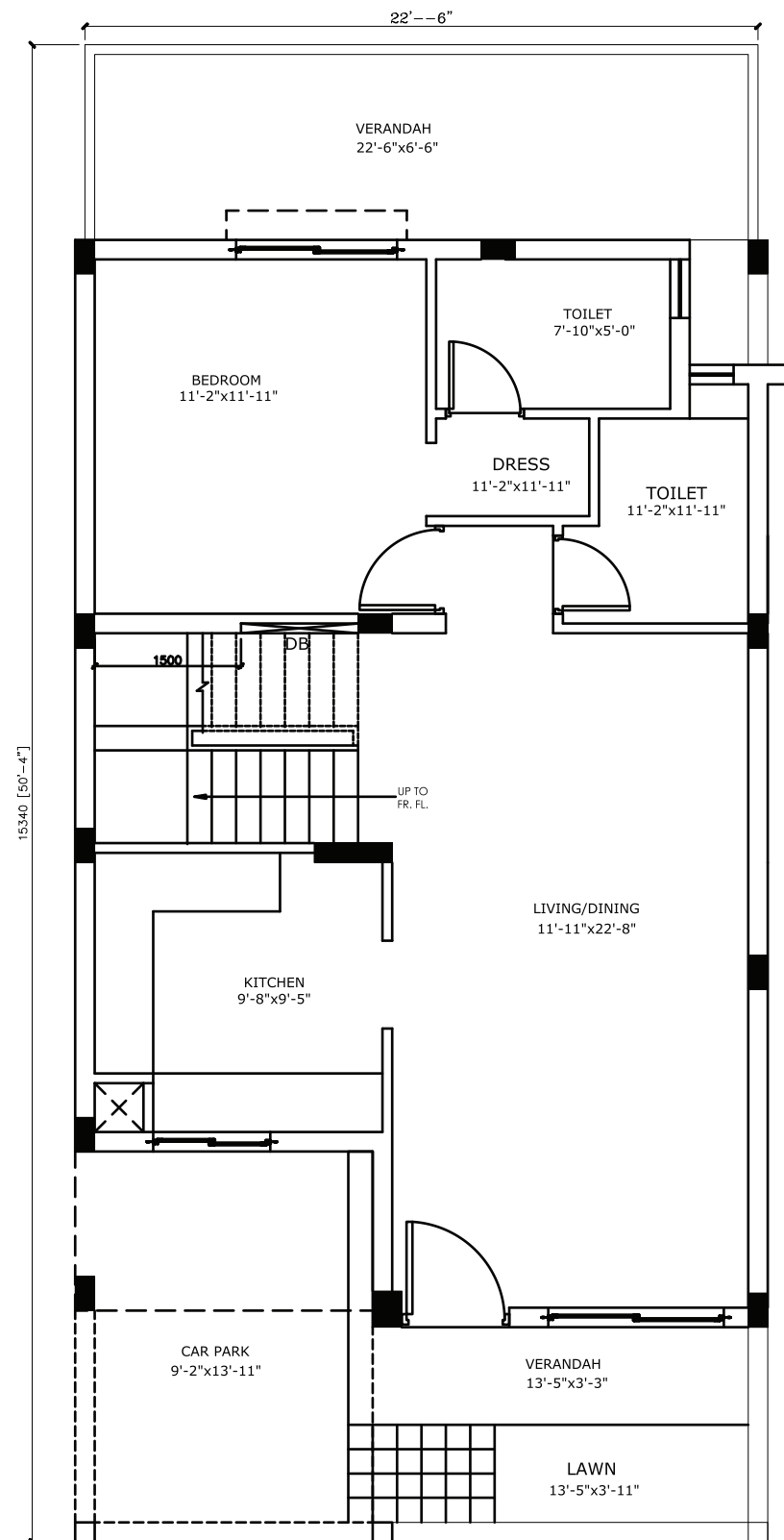
Police station in the vicinity for added security

# Thoughtfully planned, elegantly designed

Each City Front Villa is a seamless blend of function and finesse — with generous spaces, abundant natural light, and intelligent layouts that adapt to every family's needs.



# Ground Floor Plan

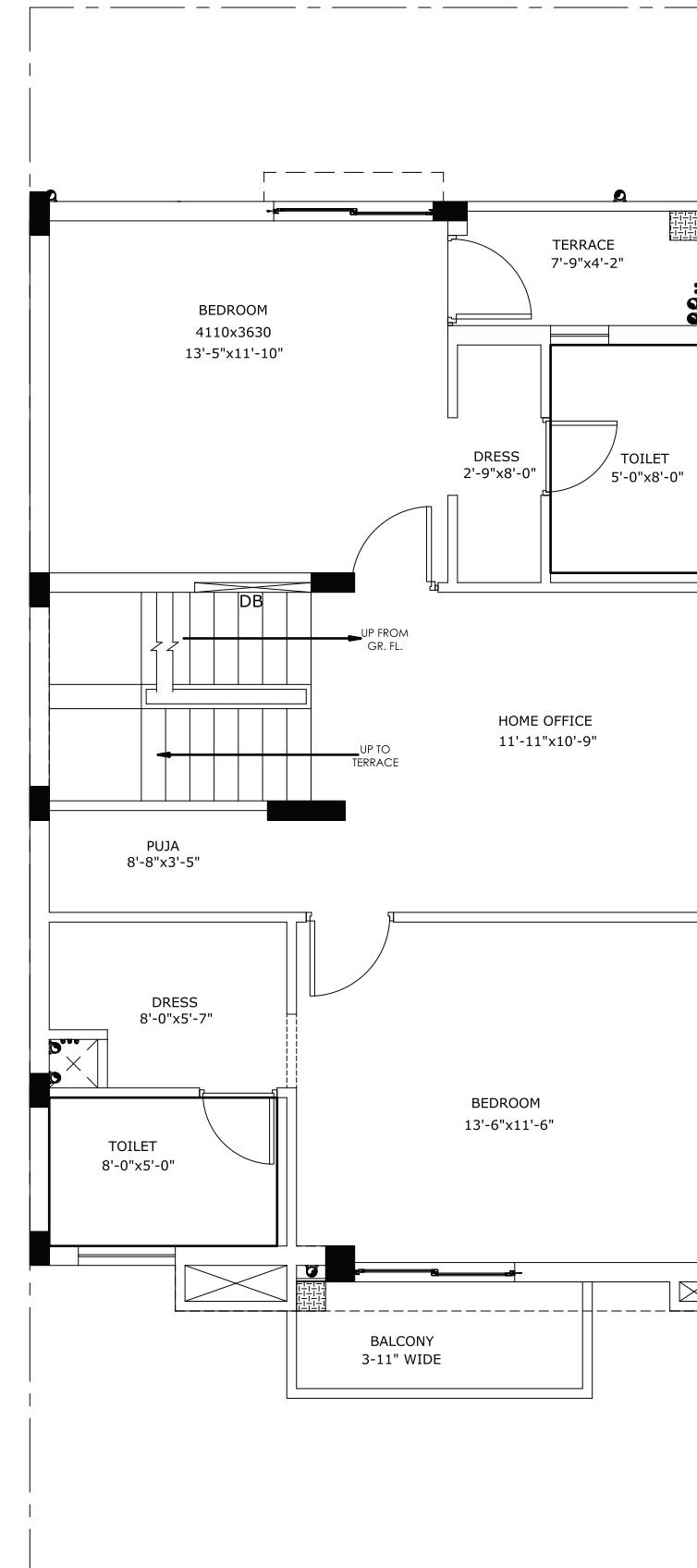


**GROUND FLOOR PLAN**

PLOT SIZE : 7.0M X 16.24M

BUILD UP AREA : 771 SQ FT

# First Floor Plan



**FIRST FLOOR PLAN**

BUILD UP AREA : 842 SQ FT